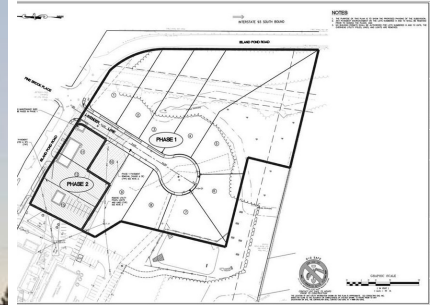


421 Island Pond Road #824-20N-13
Manchester, NH 03109

kW METROPOLITAN
KELLERWILLIAMS. REALTY
BEDFORD

Powered by [homes.unionleader.com](https://www.homes.unionleader.com)

MLS# 4686754



\$ 365,900

3 Bedrooms . 1 Bathroom . 2,076 Sqft

LAST LOT! Construction is about to start on the Phase II last 3 lots! Hard-wood floors in Kitchen-Dining & Foyer. Formal Dining Room or Den and Family open to Kitchen. First floor laundry and half bath. Master suite with custom shower, double vanity and two walk-in closets. Add a 19x17 bonus room or bedroom on the second floor for an additional 323 SF. Accommodating builder will customize to your tastes. Just minutes to Manchester-Boston Regional Airport, Downtown Manchester and I93. Area shopping, schools, hospitals and services also nearby. PHOTOS ARE FROM BUILDER'S PORTFOLIO: From the 5 homes built on Lavender Lane in the last year.



Andrea Kenney

PHONE

603-232-8282

CELL

603-582-5166