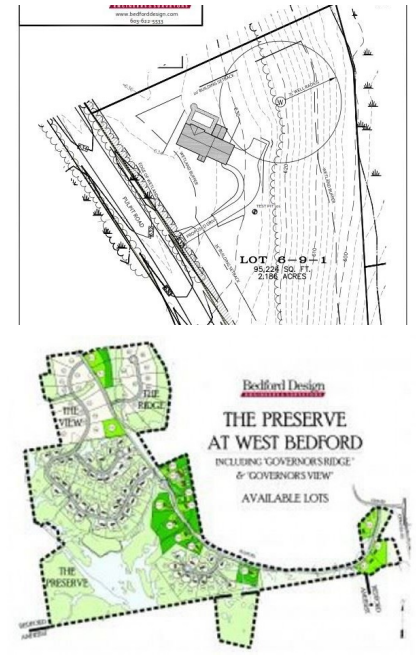
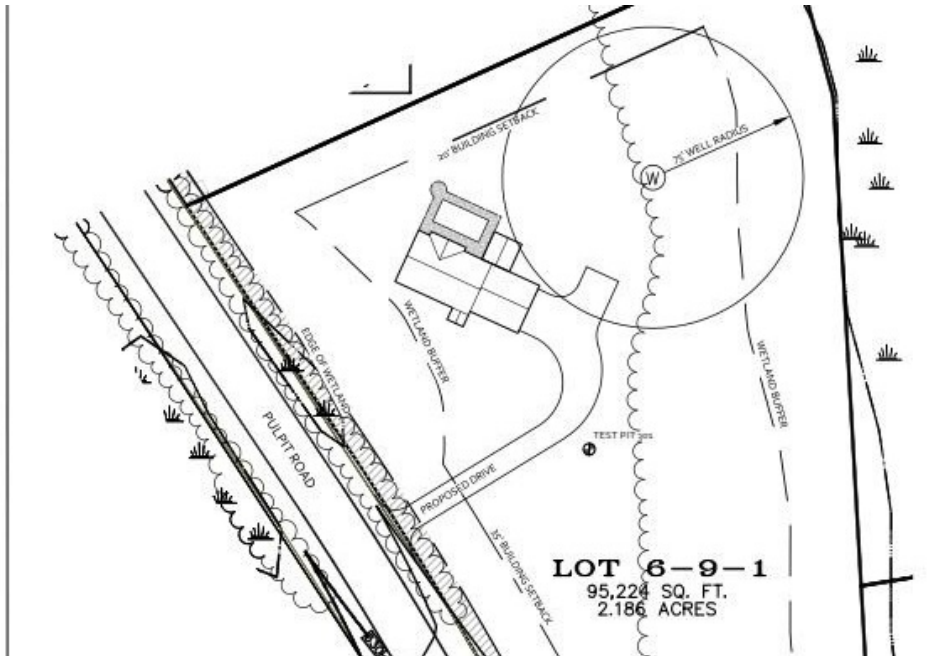


Lot 6-9-1 Pulpit Road Bedford, NH 03110



Powered by [homes.unionleader.com](https://www.homesunionleader.com)

MLS# 4372337



\$ 296,900

GOVERNOR'S RIDGE, The Preserve at West Bedford. This is the newest and the last subdivision of its kind for the Bedford community. Comprised of farm land and mature wooded areas, the area is framed by original stonewalls and adjacent to the Pulpit Rock Conservation Area. In keeping with historic New England charm, the sites have been kept in as natural state as possible. Lots are available for individual purchase or may be included in a construction to permanent financing program for a custom home. 18 lots are readily available but the area will support 90 architecturally pleasing & traditional homes. Lots range in size from 1+ to 4+ Acres, many with views or wooded vistas. An ideal commuter location just minutes to Routes 101/114 Intersection for travel N-S on I93 or Route 3; E-W on Route 101. Easy access to shopping/services. Bedford H.S. is in Top 5 in NH. Seller/Broker interest is disclosed. SELLER to pay Current Use Tax at closing with acceptable offer terms.



Andrea Kenney

PHONE
603-232-8282

CELL
603-582-5166