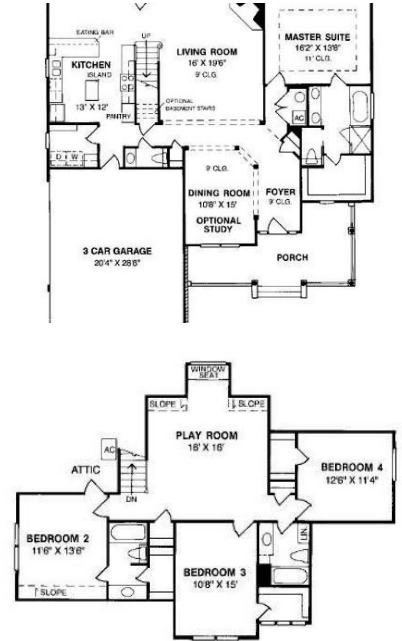


17-4-55 Sprague Mill Road #17-4-55
Bedford, NH 03110

kW METROPOLITAN
KELLERWILLIAMS. REALTY
BEDFORD

Powered by **homes.unionleader.com**

MLS# 4677614



\$ 659,900

4 Bedrooms . 3 Bathrooms . 2,800 Sqft

This builder intends to meet all your demands...open concept, first floor master suite, 9' ceilings, great room with fireplace, a generous bonus or playroom and guest bedrooms on the second floor. Combine that with sound construction, expert finish, fine amenities, and the experience to back it up! The Preserve at West Bedford is the newest and the last subdivision of its kind for the Bedford community as a residential open space subdivision. Comprised of farm land and mature wooded areas, the area is framed by original stonewalls and adjacent to the Pulpit Rock Conservation Area. One of the hiking trail-heads is within the subdivision and this peaceful area is just 5 miles to major highways and thoroughfares, shopping and schools that are the top rated in the State. We welcome you to explore this excellent opportunity to customize your dream home! Note: PHOTOS reflect builder's workmanship on other homes and are labeled BUILDER PORTFOLIO PHOTO as construction is just getting underway.



Andrea Kenney

PHONE
603-232-8282

CELL
603-582-5166