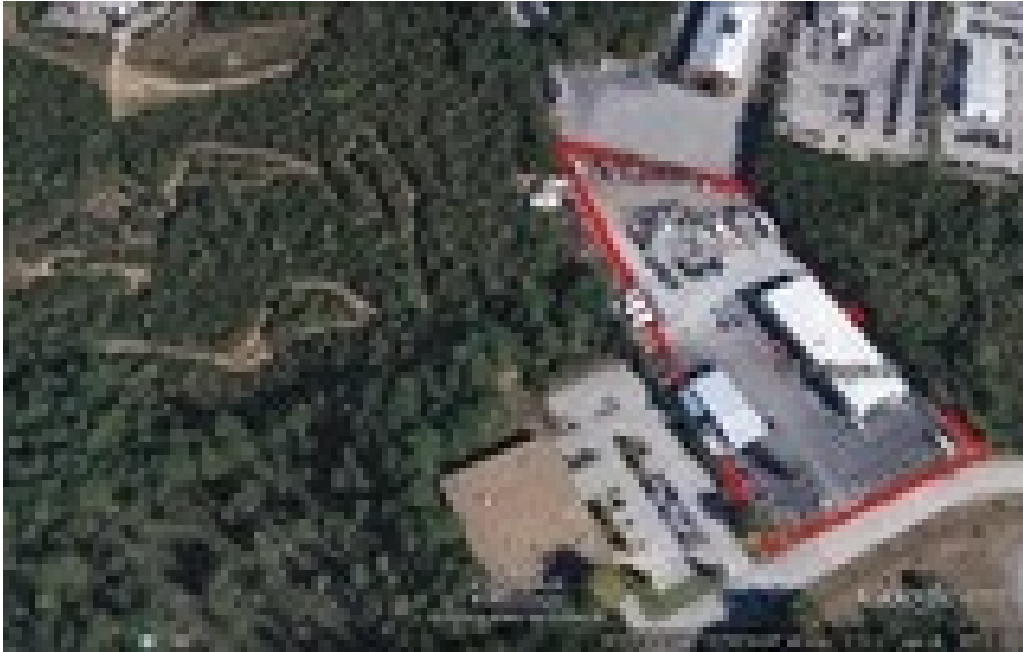


12 Integra Drive
Concord, NH 03301

kw METROPOLITAN
KELLERWILLIAMS. REALTY
BEDFORD

Powered by **homes.unionleader.com**

MLS# 4668459



\$ 3,200,000

This site consist of two prefabricated steel panel industrial buildings, one being 16,000SF and the other 5,000 SF along with a cell tower. Located just off Manchester Street on a 3.76 acre lot with tenants in place. Present cap rate 7% with a potential improvement . Well maintained facility, easy access to main highways, credit worthy tenant



David Grappone

CELL

978-761-3557