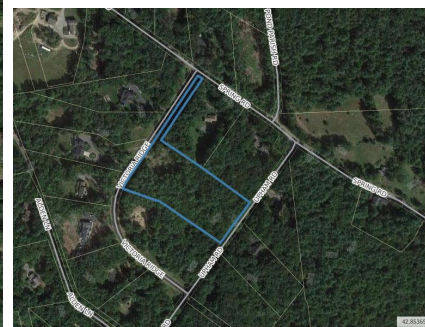
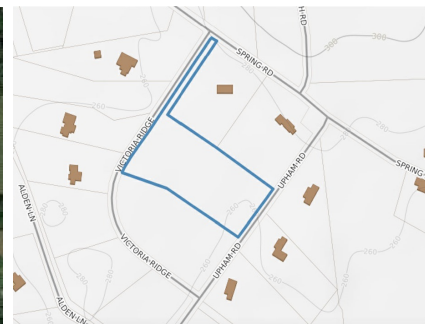
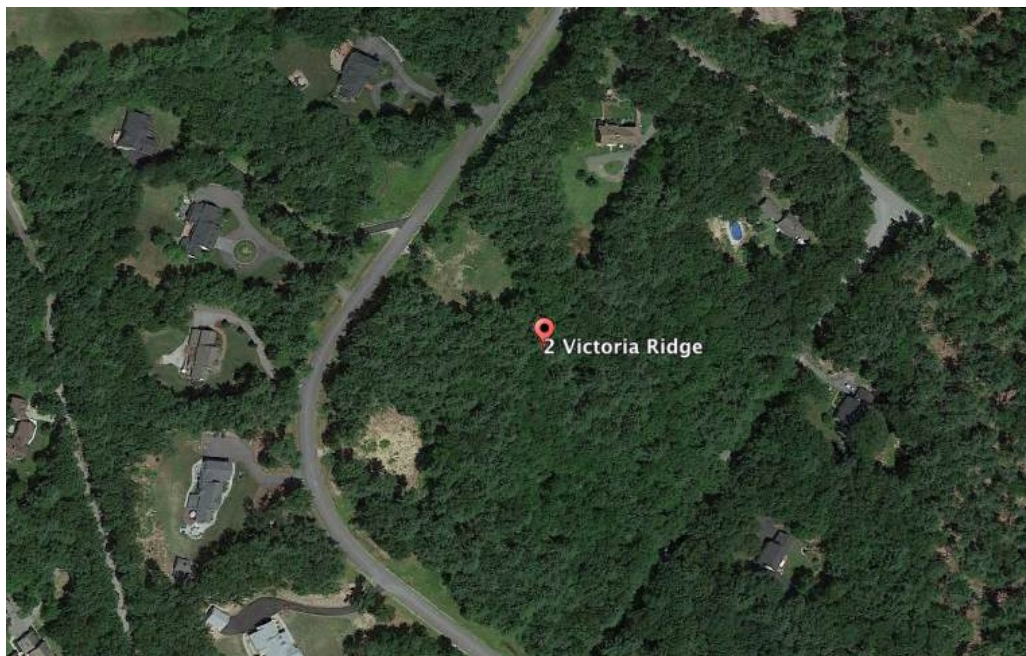


2 Victoria
Amherst, NH 03031

kW METROPOLITAN
KELLERWILLIAMS. REALTY
BEDFORD

Powered by **homes.unionleader.com**

MLS# 4787972



\$ 225,000

Come create your dream home on this rare, level 4- acre building lot in Victoria Ridge , Amherst's premier subdivision . The largest lot in Victoria Ridge, this parcel is beautifully wooded and could easily accommodate a pool. And the location is unmatched: you're just down the street from Souhegan Woods Golf Club; right between the fabulous natural spaces of Pond Parish and Horse Hill Nature Preserve; not far from all the shops, restaurants, and amenities of Route 101A; and a straight shot from Exit 11 on the Everett Turnpike for easy access north or south. Knight Custom Homes offers generous allowances and can adjust any plan to your families needs, but there's no builder tie-in so you can bring your own preferred builder if you like. There are already six beautiful, high-end homes in the subdivision, so now it's your turn to create the luxury and comfort you deserve!



Greg Powers

PHONE
603-232-8282

CELL
603-716-0254