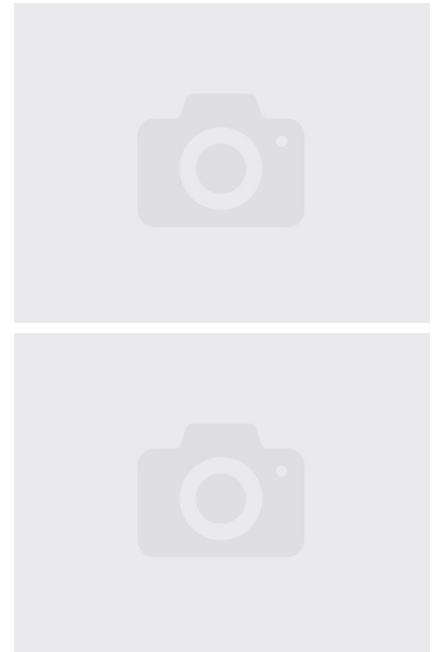
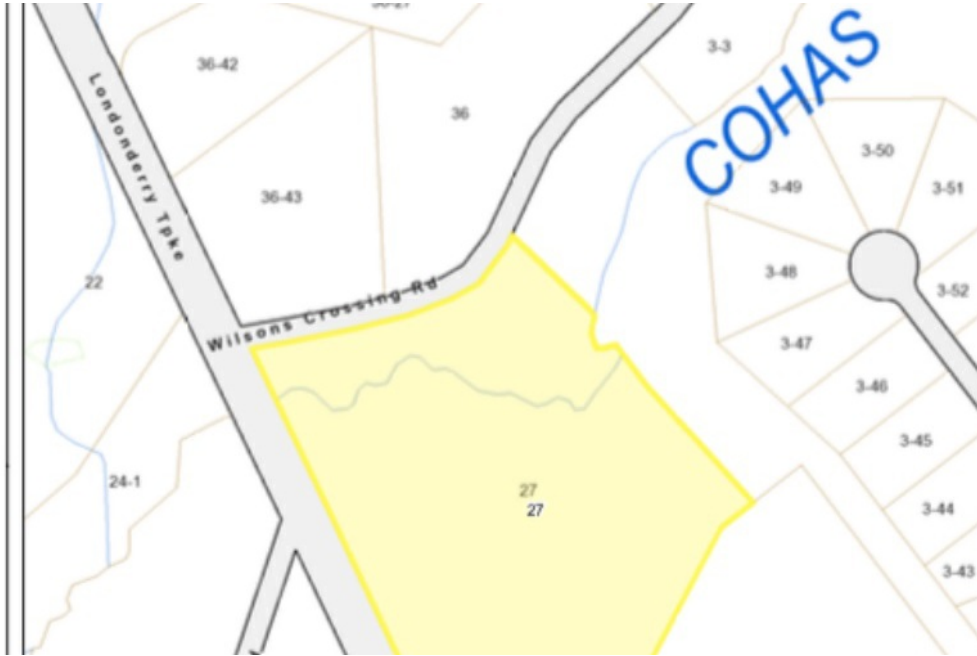


Londonderry
Auburn, NH 03032

kw METROPOLITAN
KELLERWILLIAMS. REALTY
BEDFORD

Powered by **homes.unionleader.com**

MLS# 4785207



\$150,000

13 Acres in the heart of Auburn close to the Londonderry and Derry town lines. Build in Auburn and enjoy the low tax rates and small town feel, while being close to Interstate 93 and Route 101. This large lot is on the corner of Londonderry Turnpike and Wilson's Crossing. While the property does contain wetlands initial engineering review *suggests* at least two buildable lots. On the flip side, if you liked the access to the main road and were thinking of a more commercial enterprise, many adjacent lots are zoned commercial/industrial and a buyer could *potentially* get a variance for a land use change. The possibilities are limitless!



Rachael Bohac

PHONE
603-232-8282

CELL
603-674-2177