

**32 Richards Way**  
Farmington, NH 03835

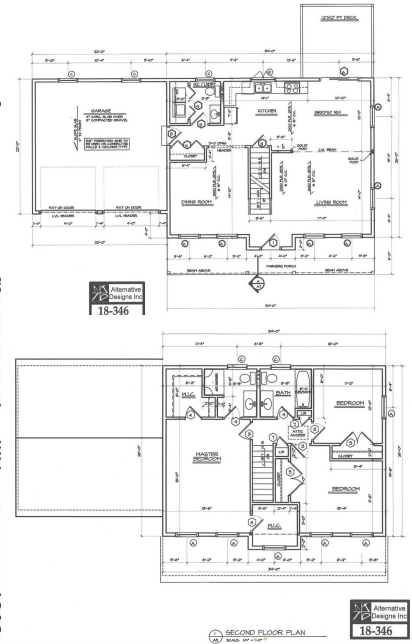
**kw METROPOLITAN**  
KELLERWILLIAMS. REALTY  
**LONDONDERRY**

Powered by **homes.unionleader.com**

**MLS# 4763027**

FIRST FLOOR	900 S.F.
SECOND FLOOR	900 S.F.
TOTAL	1800 S.F.

Alternative  
Designs Inc  
**8-346**



**\$ 329,000**

**3 Bedrooms . 2 Bathrooms . 1,800 Sqft**

Your dream home awaits! Introducing Richards Way, Farmington's newest community! Just a short drive from Portsmouth, NH ski and lakes region with easy access to the Spaulding Turnpike and Route 95. This classic, colonial style home features a spacious, open concept first floor and two good sized bedroom and an en-suite master on the second. The spacious farmers porch adds a welcoming touch and the attached 2 car garage allows for snow free parking on those winter days. Excellent allowances and Modern finishes give you the opportunity to add your personal style! Richards Way is situated on over 73 beautiful acres with mountain views and 34 acres of open space. Close to shopping and services. Additional lots and plans available. Contact The Paula Martin Group for more information 603-770-5162



**Paula Martin Group**

PHONE  
**603-965-2992**

CELL  
**603-770-5162**