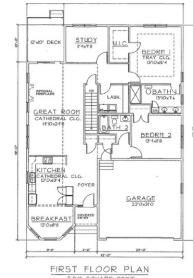


**Lot 3 Blackstone Drive**  
Raymond, NH 03077

**kW METROPOLITAN**  
KELLERWILLIAMS. REALTY  
**BEDFORD**

Powered by **homes.unionleader.com**

**MLS# 4729765**



**\$ 394,900**

**2 Bedrooms . 1 Bathroom . 1,805 Sqft**

Location, location, location! Welcome to Blackstone Reserve, your gateway from the City to the Seacoast. Located just one mile from Exit 4, Route 101 is where you will find this luxurious 55+ active adult community. Blackstone Reserve offers a natural picturesque setting featuring 66 single-family detached condos. Residents will enjoy a low maintenance environment giving you time to enjoy a social climate defined by community living, and a physical environment to keep active and young. 80/20 rule for occupancy applies - 20% of residents can be under 55 years old. Each home at Blackstone Reserve provides open-concept, one level living at its best. The comfortable floor plans range between 1,710 square feet to 2,056 square feet and feature 2 bedrooms, 2 bathrooms, master bedroom with en suite, 2 car attached garages, and full basements. Standard features include: cathedral ceilings, hardwood floors, granite countertops, stainless steel appliances, high-end cabinetry, central A/C and so much more! Homeowners make selections to customize and personalize each home to fit their lifestyle and color preferences. Prices start at \$374,900. Site development has begun on Phase 1 (red on site map) and the first model homes will be available in early 2019. The model featured here is the Sonoma , other...



**Frank DiDonato**

PHONE

**603-232-8282**