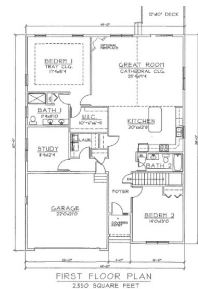


**Lot 2 Blackstone Drive**  
Raymond, NH 03077

**kW METROPOLITAN**  
KELLERWILLIAMS. REALTY  
**BEDFORD**

Powered by **homes.unionleader.com**

**MLS# 4729735**



**\$ 429,900**

**2 Bedrooms . 1 Bathroom . 2,088 Sqft**

Location, location, location! Welcome to Blackstone Reserve, your gateway from the City to the Seacoast. Located just one mile from Exit 4, Route 101 is where you will find this luxurious 55+ active adult community. Blackstone Reserve offers a natural picturesque setting featuring 66 single-family detached condos. Residents will enjoy a low maintenance environment giving you time to enjoy a social climate defined by community living. Each home at Blackstone Reserve provides open-concept, one level living at its best. The comfortable floor plans range between 1,710 square feet to 2,056 square feet and feature 2 bedrooms, 2 bathrooms, master bedroom with en suite, 2 car attached garages, and full basements. Standard features include: cathedral ceilings, hardwood floors, granite countertops, stainless steel appliances, high-end cabinetry, central A/C and so much more! Homeowners make selections to customize and personalize each home to fit their lifestyle and color preferences. Prices start at \$374,900. Lot 2 is currently under construction and will be The Chateau, featured here. Other floor plans and options are available on different lots. This project has received full approval from the NH Attorney General's Office.



**Frank DiDonato**

PHONE  
**603-232-8282**